



North Valley Passenger Rail Strategic Plan

CHICO • GRIDLEY • MARYSVILLE/YUBA CITY
PLUMAS LAKE • SACRAMENTO

Appendix B Potential Track Improvements Evaluation

Final Report

May 2024

North Valley Passenger Rail Strategic Plan

Potential Track Improvements Evaluation

September 16, 2022

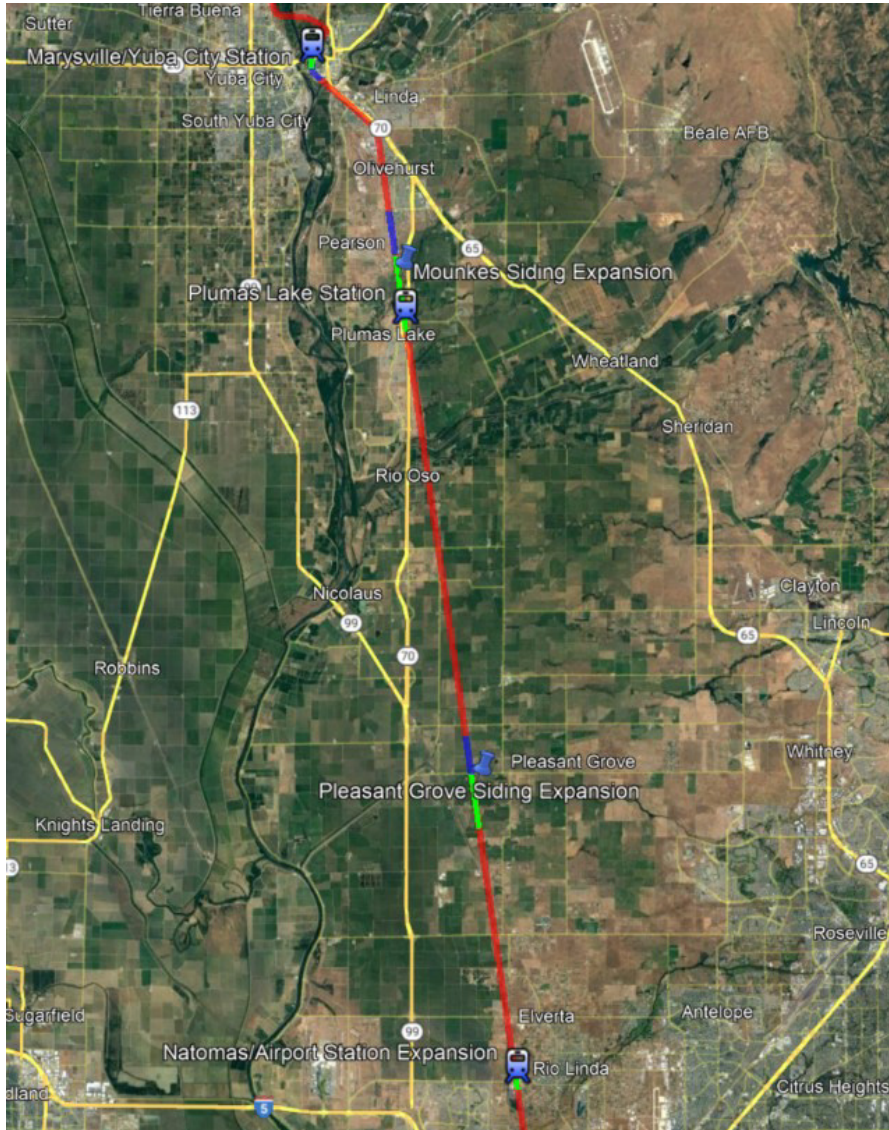
Potential Track Improvement Summary

Potential Track Improvement Summary

- **Natomas to Marysville (Sac Sub)**
 - Station track with Expanded Natomas Station
 - Expanded Pleasant Grove siding
 - Expanded Mounkes siding with Plumas Lake Station
 - Shifted siding with Marysville Station
- **Marysville to Chico (Valley Sub)**
 - Expanded Berg siding
 - Expanded Fagan siding with Gridley Station
 - Expanded Richvale siding
 - New Durham siding
 - Station track with Chico Station

Natomas to Marysville (Sac Sub) Track Improvements

Natomas to Marysville – Summary



- **Natomas Station Expansion**

- Add station track, platform and parking
- Pleasant Grove Siding
- Extend siding south to a final length of 15,000 ft

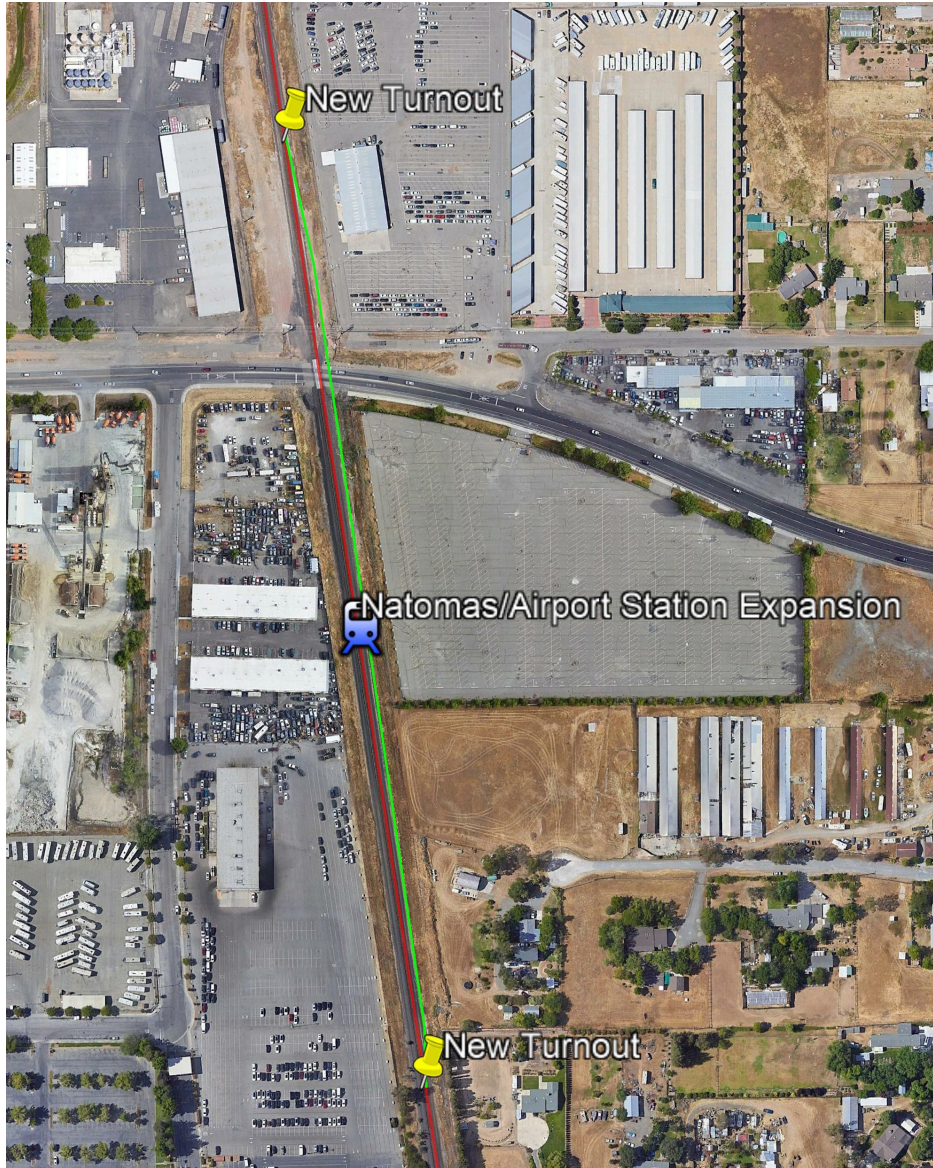
- **Mounkes Siding**

- Extend siding south to a final length of 19,800 ft
- Add station at Plumas Lake

- **Marysville Station and Siding**

- Shift mainline track
- Add center platform and parking

Natomas to Marysville – Natomas Station Expansion



- **Existing**
 - Single Track
- **Valley Rail Improvements**
 - Station Track & Layover West of Mainline
 - Platform & Station Facilities West of Mainline
- **Improvements**
 - Station Track 0.3 Miles (MP146.0 to MP146.3)
 - New Platform East of Mainline
 - Parking Expansion
 - Final Station Siding Length 1,500'

Natomas to Marysville – Pleasant Grove Siding Extension



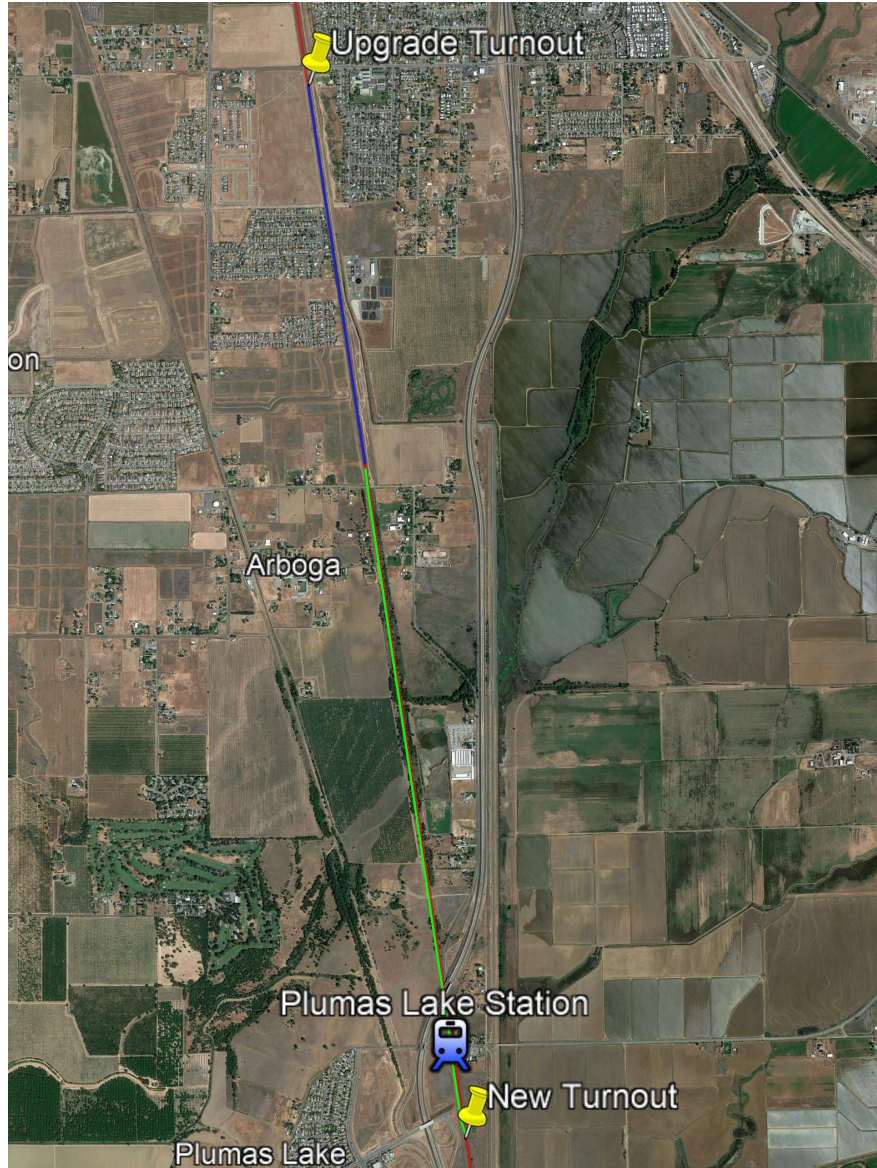
- **Existing**

- Siding Length - 1.2 Miles (MP155.9 to MP 157.1)

- **Improvements**

- South Extension Length 1.7 Miles (MP154.2 to MP155.9)
- Three New Bridges
- Upgrade Turnout at MP 157.2
- Final Siding Length 15,000'

Natomas to Marysville – Mounkes Siding Extension



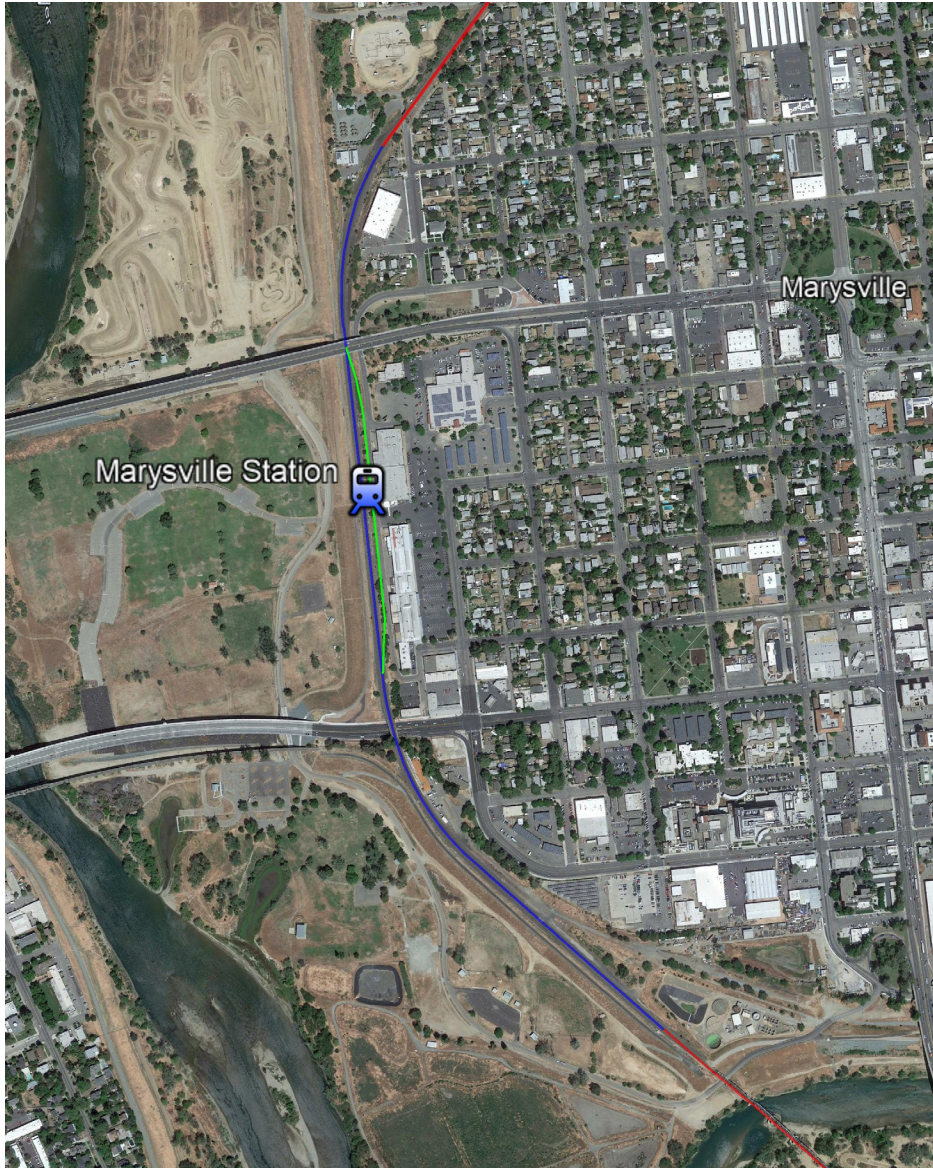
- **Existing**

- Siding Length - 1.5 Miles (MP172.1 to MP 173.6)

- **Improvements**

- South Extension Length 2.4 Miles (MP172.1 to MP169.7)
- Upgrade Turnout at MP 173.6
- Final Siding Length 19,800'
- New Station at Plumas Lake
 - Center Platform with Grade Separated Pedestrian Access
 - Parking to Support Station

Natomas to Marysville – Marysville Station and Siding Modification



- **Existing**

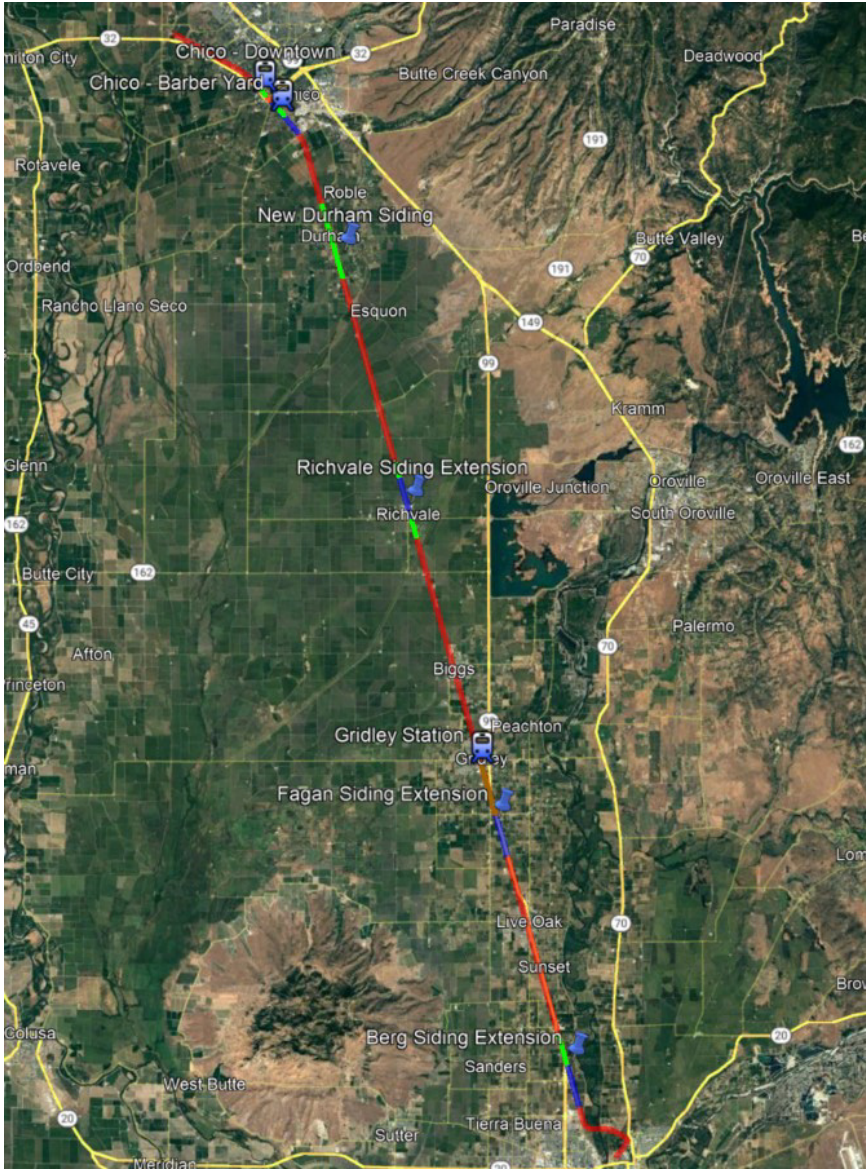
- Siding Length - 1.0 Miles (MP178.4 to MP 179.4)

- **Improvements**

- Shift Mainline Track East
- Center Platform with Grade Separated Pedestrian Access
- Parking to Support Station

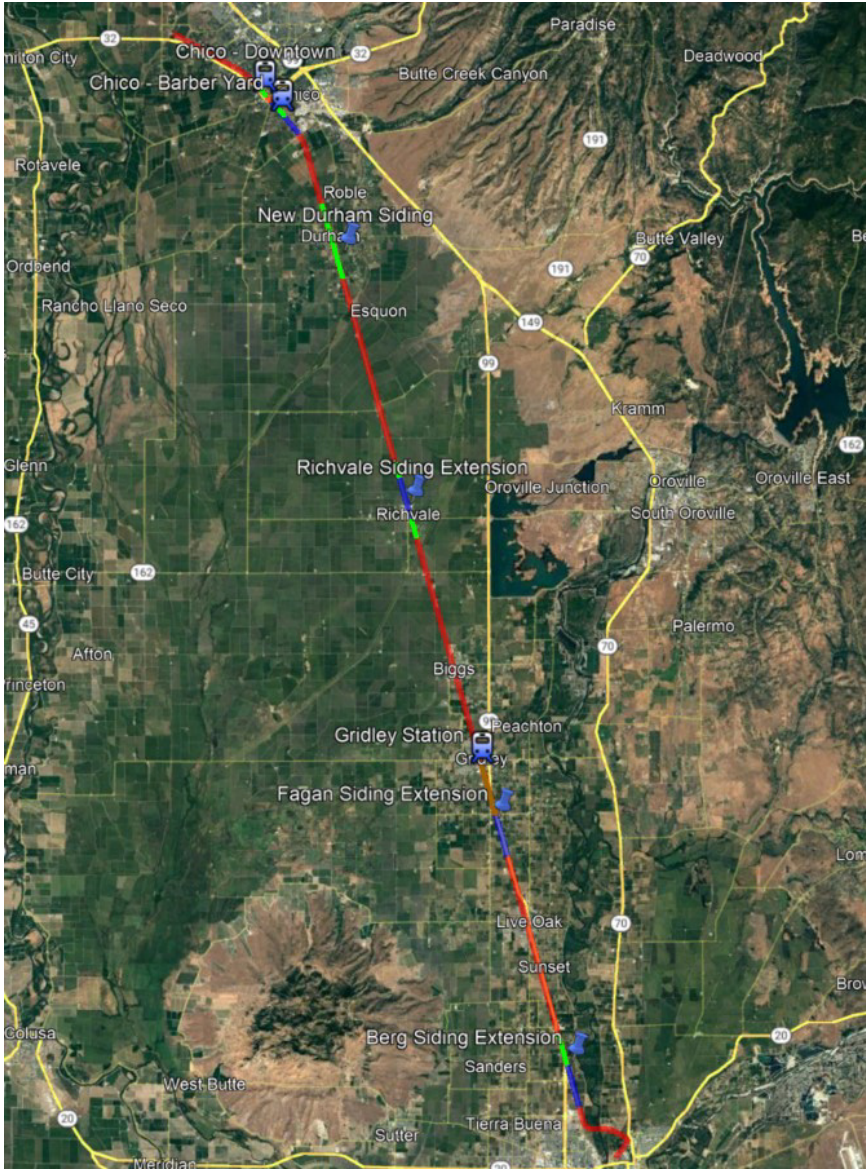
Marysville to Chico (Valley Sub) Track Improvements

Marysville to Chico – Summary



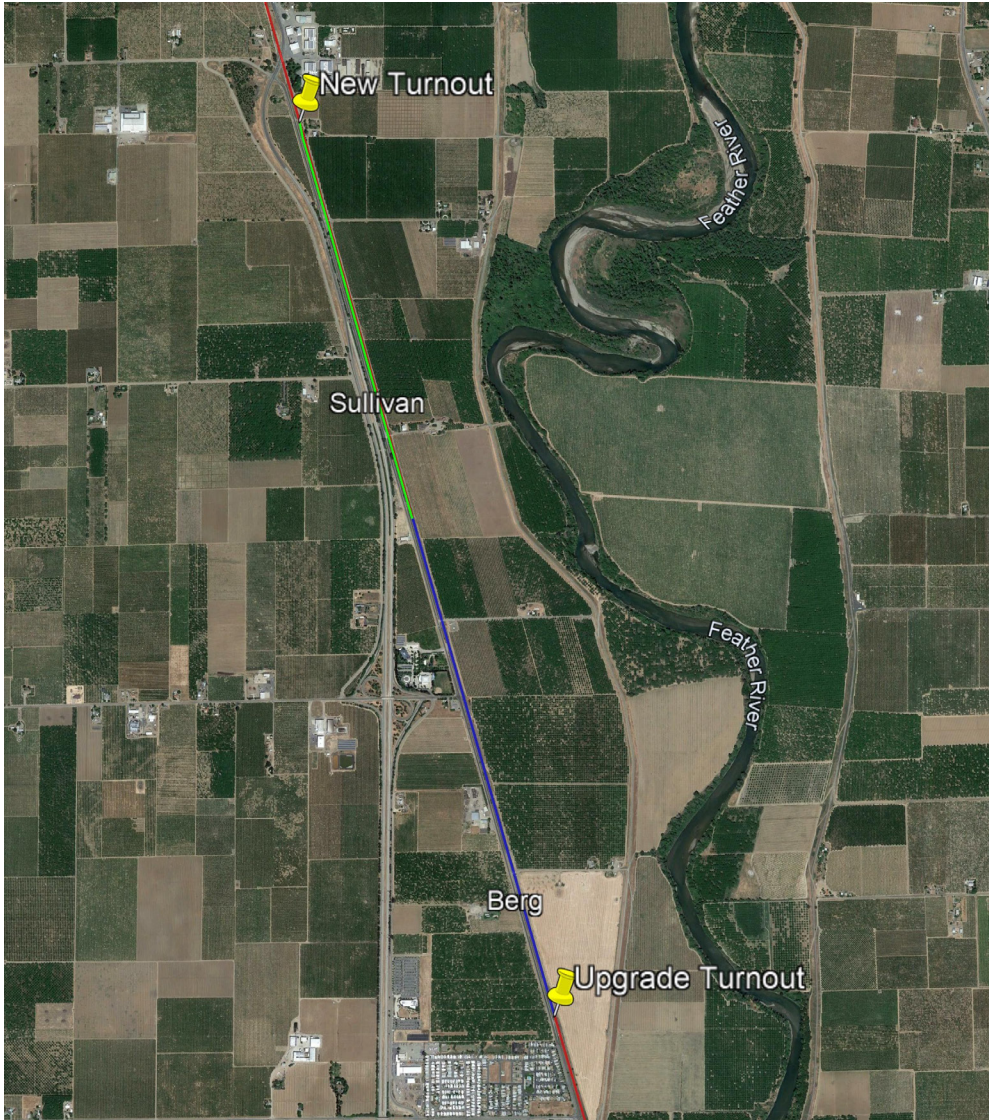
- **Berg Siding**
 - Extend siding north to a final length of 15,000 ft
- **Fagan Siding**
 - Extend siding north to a final length of 19,400 ft
 - Add platform and parking
- **Richvale Siding**
 - Extend siding north and south to a final length of 15,000 ft

Marysville to Chico – Summary



- **Durham Siding**
 - Install a new siding a final length of 15,000 ft
- **Downtown Chico Station Option**
 - Add station bypass track
- **Barber Yard Chico Station Option**
 - Add station track, platform and parking
 - Add layover track

Marysville to Chico – Berg Siding Extension



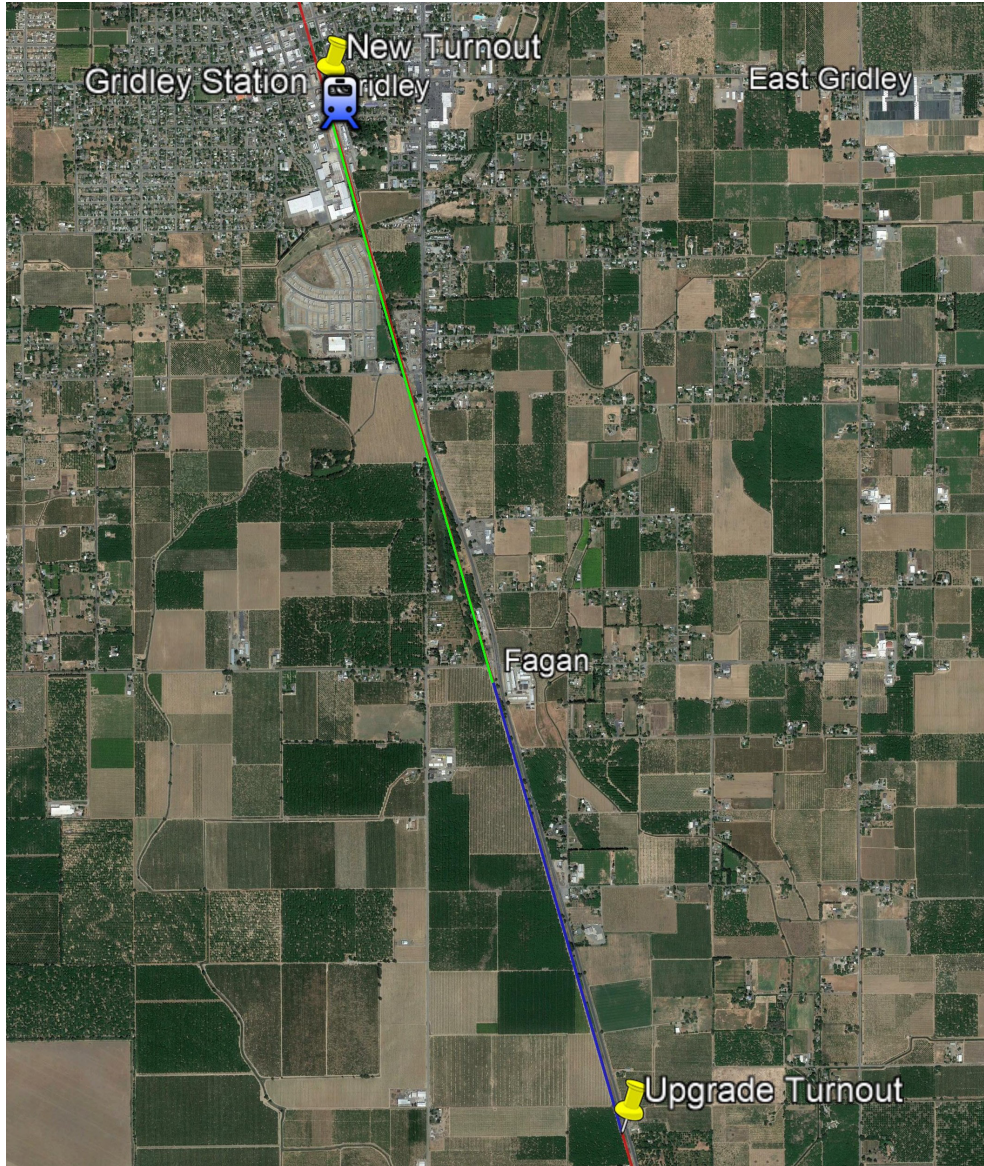
- **Existing**

- Siding Length - 1.7 Miles (MP144.3 to MP 146.0)

- **Improvements**

- North Extension Length 1.3 Miles (MP146.0 to MP147.3)
- Upgrade Turnout at MP 144.3
- Final Siding Length 15,000'

Marysville to Chico – Fagan Siding Extension



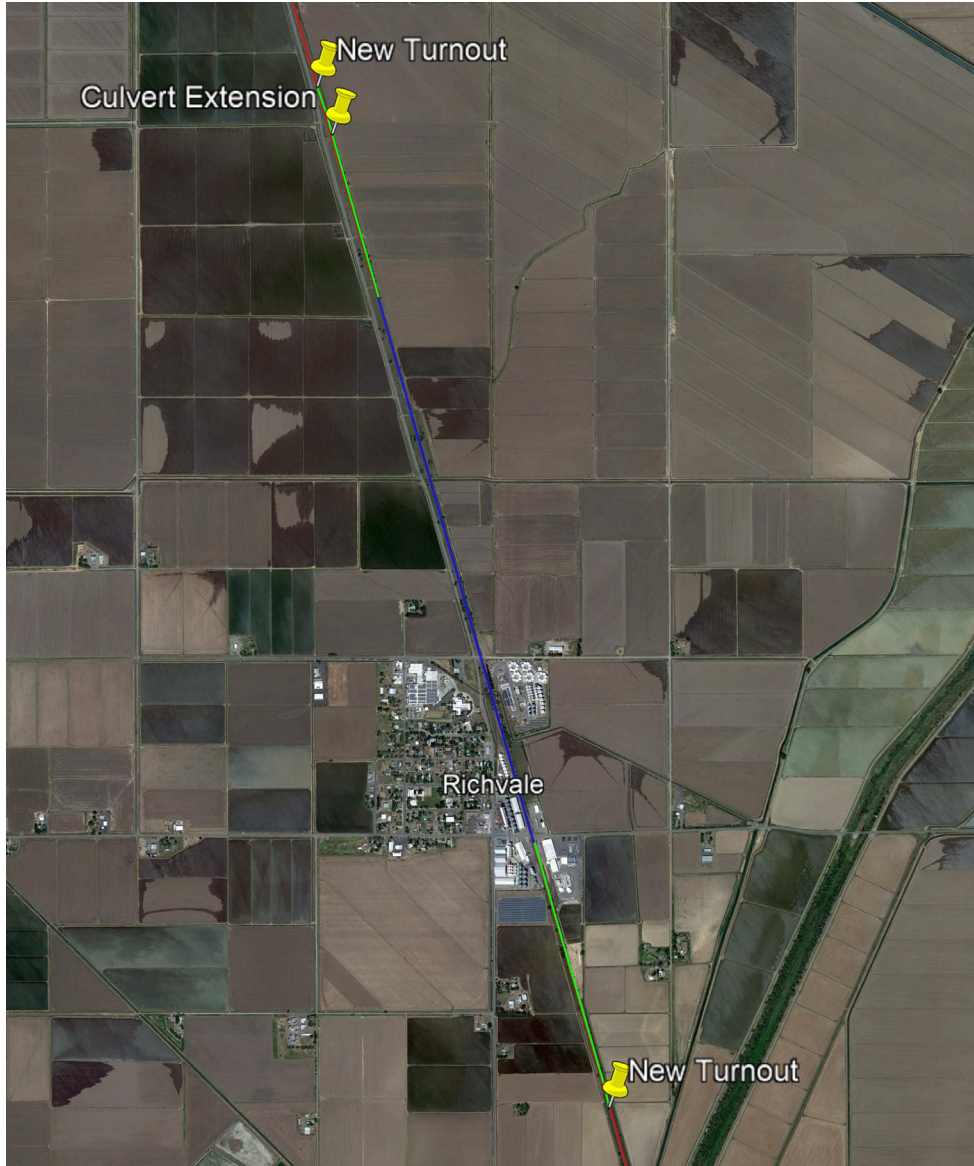
- **Existing**

- Siding Length - 1.6 Miles (MP154.1 to MP155.7)

- **Improvements**

- South Extension Length 2.1 Miles (MP155.7 to MP157.8)
- Upgrade Turnout at MP 154.1
- Final Siding Length 19,400'
- New Station at Gridley
 - Center Platform with Grade Separated Pedestrian Access
 - Parking to Support Station

Marysville to Chico – Richvale Siding Extension



- **Existing**

- Siding Length - 1.2 Miles (MP167.2 to MP 168.8)

- **Improvements**

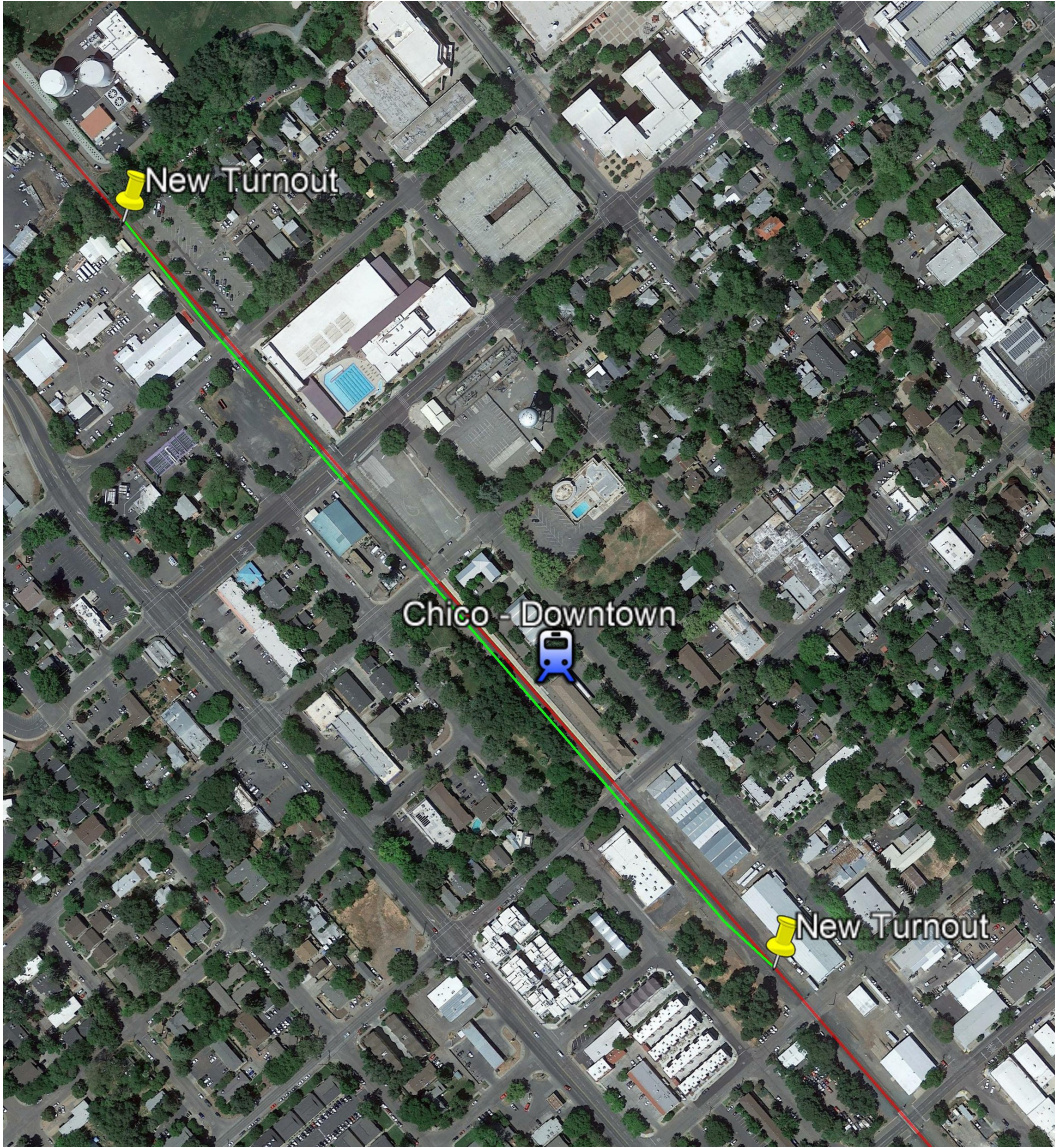
- South Extension Length 0.8 Miles (MP166.4 to MP167.2)
- North Extension Length 0.6 Miles (MP168.8 to MP169.4)
- One Culvert Extension
- Final Siding Length 15,000'

Marysville to Chico – New Durham Siding



- **Existing**
 - Single Track
- **Improvements**
 - Siding Length 2.9 Miles (MP176.5 to MP179.4)
 - Final Siding Length 15,000'

Marysville to Chico – Downtown Chico Station Option Siding



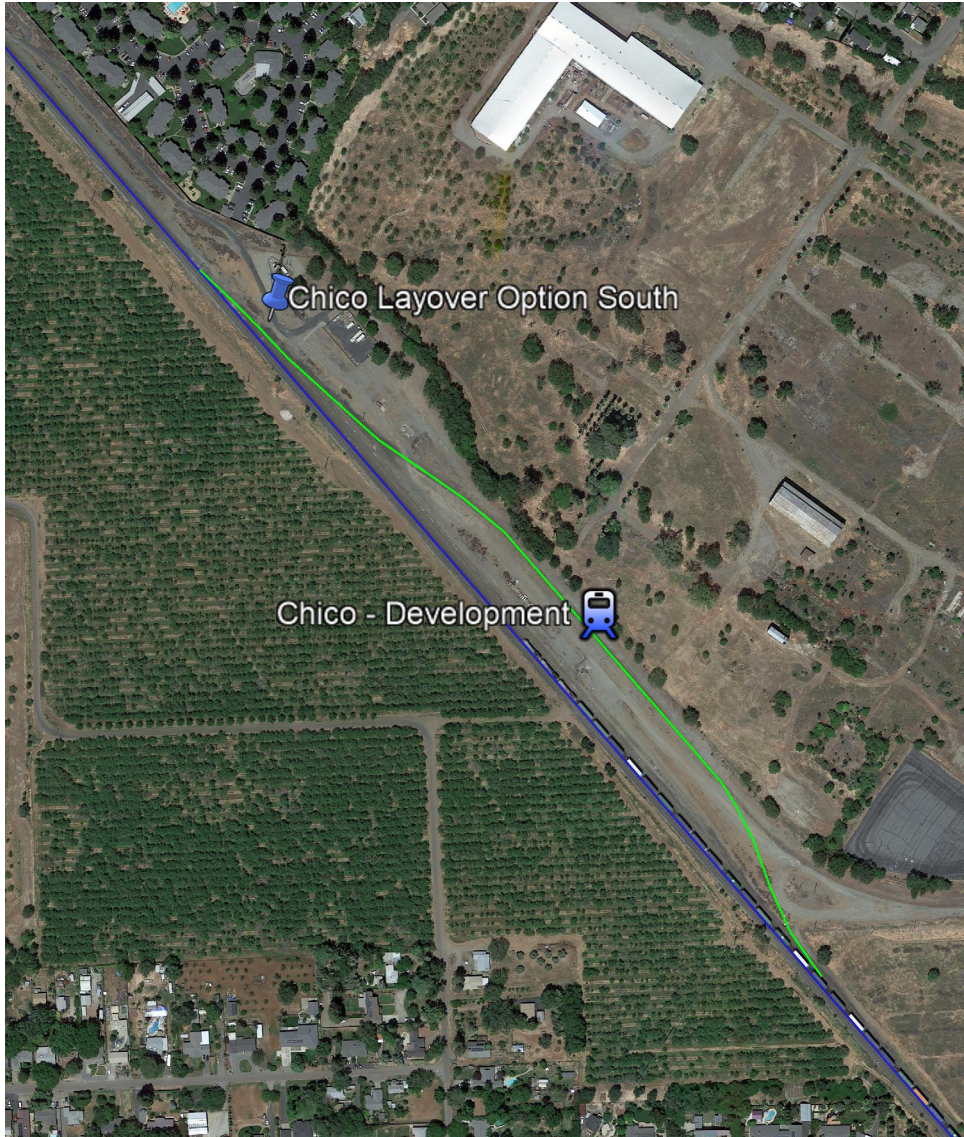
- **Existing**

- Single Track

- **Improvements**

- Station Bypass Track Length 0.4 Miles (MP184.0 to MP184.4)
- Final Siding Length 1,700'
- Side Platform
- Parking to Support Station

Marysville to Chico – Barber Yard Chico Station Option Siding



- **Existing**

- Barber Yard

- **Improvements**

- Combination of New and Upgraded Track
- Siding Length 0.4 Miles (MP183.5 to MP183.0)
- Final Siding Length 2,500'
- Side Platform
- Parking to Support Station